



# **EUPEA Central Europe Meeting**

Dublin, March 12<sup>th</sup> 2017

# Structure



## 1. Information about APEP

- Members
- Structure and Main Activities
- Current challenges
- Website and social media appearances

## 2. PE in Luxembourg

- PE at primary level
- PE at secondary level

# 1. Information about APEP



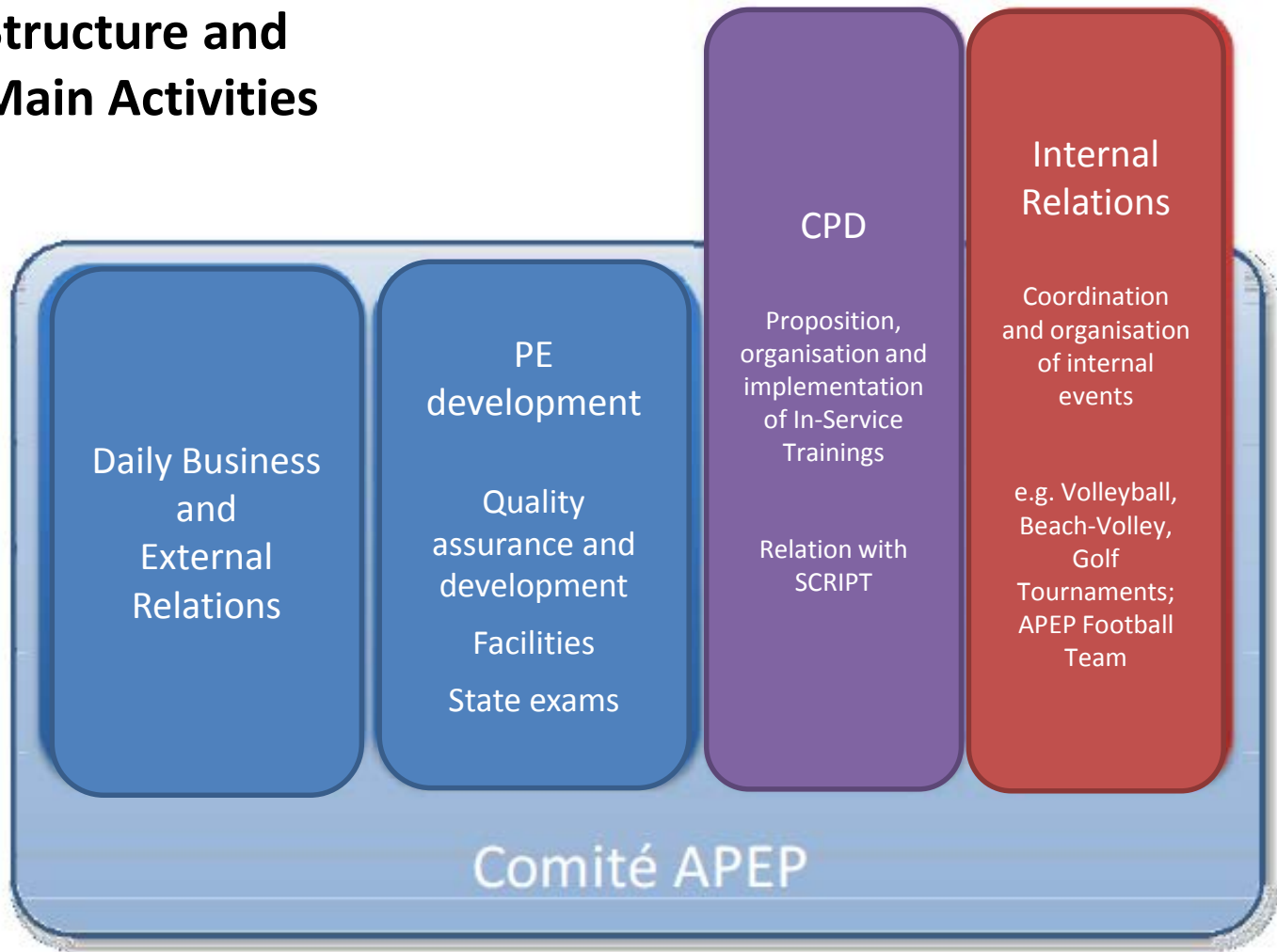
## Members

- APEP = **A**ssociation des **p**rofesseurs d'**é**ducation **p**hysique
- Founded in 1959
- About 250 Members
- Almost 100% of PE teachers in Secondary Education

# 1. Information about APEP



## Structure and Main Activities



# 1. Information about APEP



## **Current challenges**

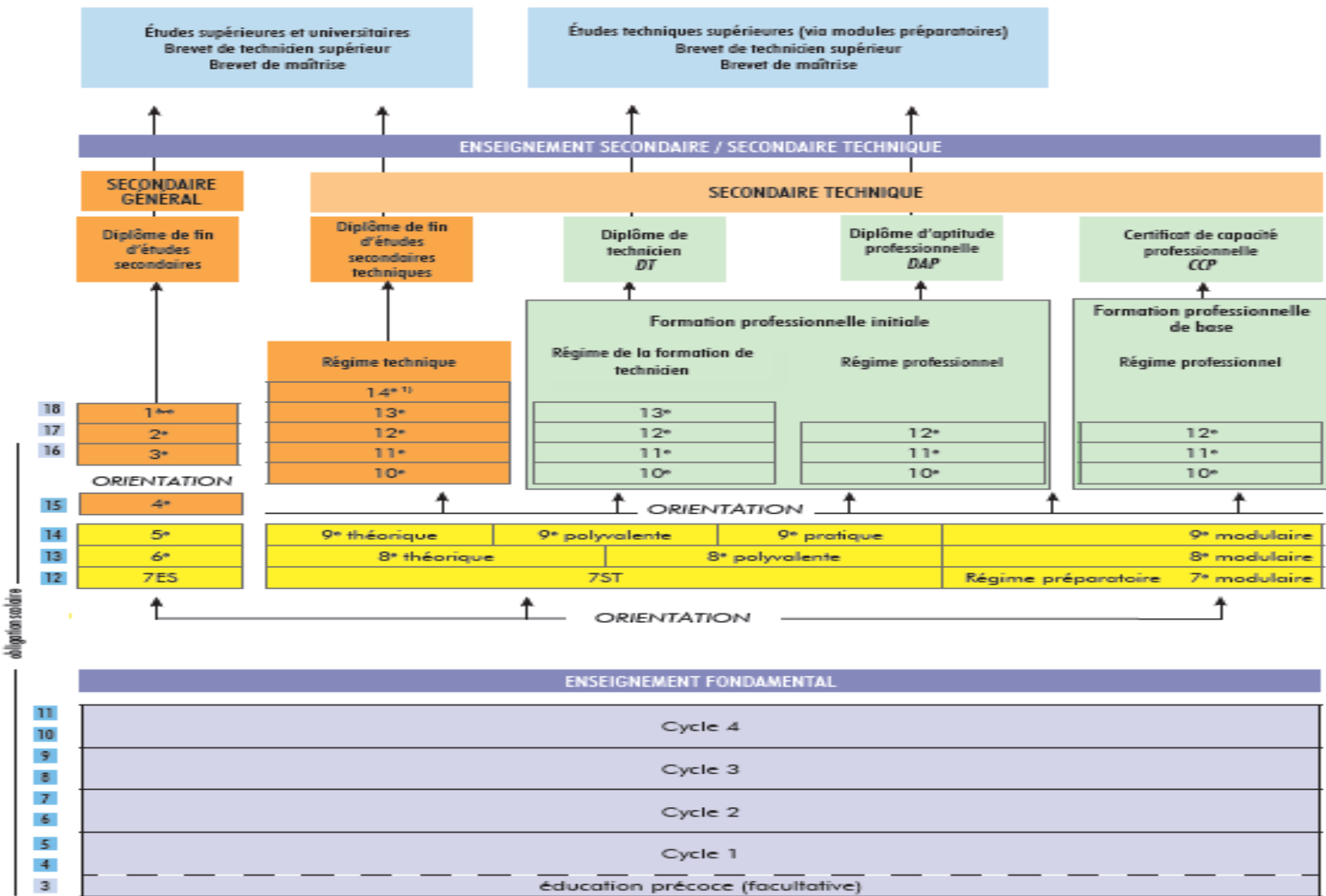
- Coefficient of School Sport lessons
- Status of PE in Luxembourg in general
- Relationship with Minister for Sports
- Reform of Secondary Education (in preparation since 2010)

# 1. Information about APEP



## **Website and social media appearances**

- [w3.restena.lu/a pep](http://w3.restena.lu/a pep)
- Will soon be changed into [a pep.lu](http://a pep.lu)
- 2 newsletters a year
- No social media appearance (yet)



<sup>11</sup> + 14<sup>e</sup> pour la division des professions de santé et des professions sociales

## 2. PE in Luxembourg



### **PE at primary level**

- Generalist teachers teaching PE
- Initial teacher education at the University of Luxembourg (4 year bachelor) or abroad (mostly Belgium)
- Uni Lux: BScE with 13 ECTS in PE
- 3 years induction phase for civil servants at IFEN
- 48 hours CPD in 3 years
- Centralized, competence-oriented national core curriculum



## 2. PE in Luxembourg



### PE at primary level

- Subject-related Competence Areas in elementary Physical Education in Luxembourg

#### Subject-related Competence Areas (CA)

CA 1	Improvement of the fine motor skills *
CA 2	Mobilization of the basic motor skills
CA 3	Mobilization of the basic psychomotor skills *
CA 4	Participation in team sports
CA 5	Awareness of mental and physical well-being
CA 6	Practice of complex flowing movements in the water
CA 7	Moving to music **

## 2. PE in Luxembourg



### **PE at secondary level**

- PE specialists
- Initial teacher education (MSc) abroad (Belgium, Germany, France, Switzerland, Austria, ...)
- State exam in Luxembourg
- 3 years induction phase for civil servants at IFEN
- 48 hours CPD in 3 years
- Centralized, competence-oriented frame curriculum and school-based curricula

## 2. PE in Luxembourg



### PE at secondary level

- Subject-related Competence Areas

Subject-related Competence Areas (CA)	
CA 1	Health and perception activities
CA 2	Social and integrative activities
CA 3	Skill and performance activities
CA 4	Play activities
CA 5	Creating and presenting activities
CA 6	Adventure and experience activities

## 2. PE in Luxembourg



### PE at secondary level

- Movement fields in Physical Education

Movement fields in Physical Education (MF)	
MF 1	Running, Jumping, Throwing
MF 2	Moving in water
MF 3	Moving on and with devices
MF 4	Creating, Dancing, Presenting
MF 5	Playing games
MF 6	Wrestling, Scuffling, and Fighting
MF 7	Moving on rolling and sliding devices

## 2. PE in Luxembourg



### PE at secondary level

- School-based curricula (SBC)

Subject-related Competence Areas (CA)	
CA 1	Health and perception activities
CA 2	Social and integrative activities
CA 3	Skill and performance activities
CA 4	Play activities
CA 5	Creating and presenting activities
CA 6	Adventure and experience activities

Movement fields in Physical Education (MF)	
MF 1	Running, Jumping, Throwing
MF 2	Moving in water
MF 3	Moving on and with devices
MF 4	Creating, Dancing, Presenting
MF 5	Playing games
MF 6	Wrestling, Scuffling, and Fighting
MF 7	Moving on rolling and sliding devices

How to develop which competencies in which grades by which contents?  
-> Definition of Learning and Teaching modules in SBC

w3.restena.lu/apep  
yann.schneider@education.lu

**APEP**

